

How to use FTP to Upload files

In order to use this service you will need to have an email account with FIU and a SOLIX Computing Account.

- To obtain your FIU-Email username and password, go to <http://webmail.fiu.edu>
- To obtain Solix Computing Account (Solix Username and password) fill in a service request by calling 305-348-2284 or via our [Online Service Request System](#).

Below are instructions to obtain a link of an image needed to submit to Univmail. The manual will provide detailed instructions for creating a webpage and uploading files/images to that page.

I. Logging in to Solix

From Windows users:

Start>Run
Type in: telnet solix.fiu.edu
As show in Figure A

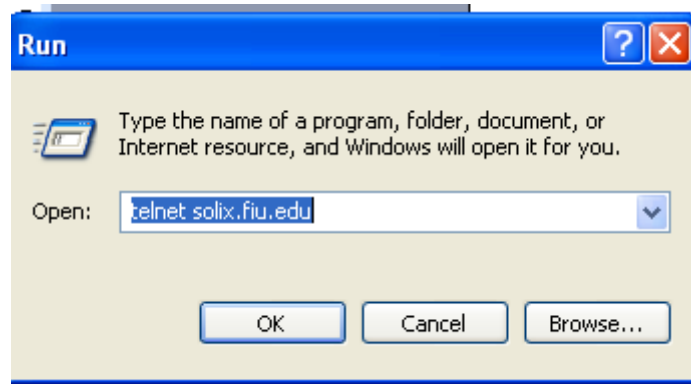


Figure A

A telnet session will open.
Type in your username and password.
As shown in Figure B

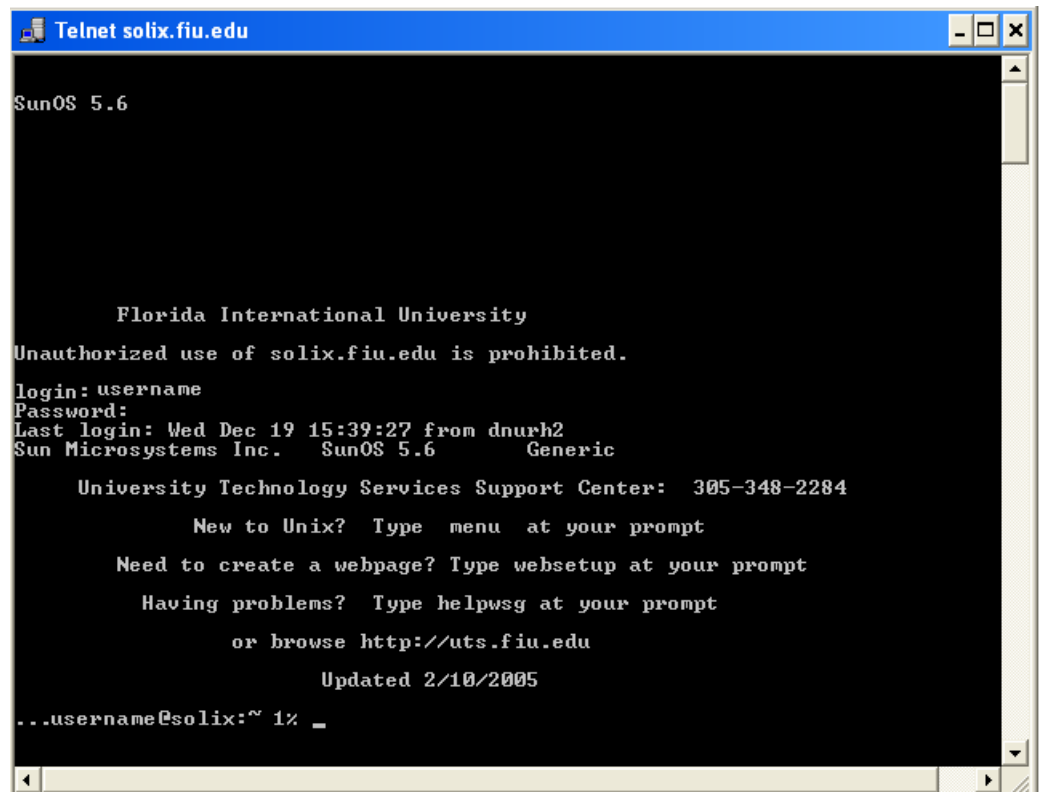



Figure B

For Mac users:

From Mac Finder, locate Terminal Application

Type in: telnet solix.fiu.edu

As shown in Figure C



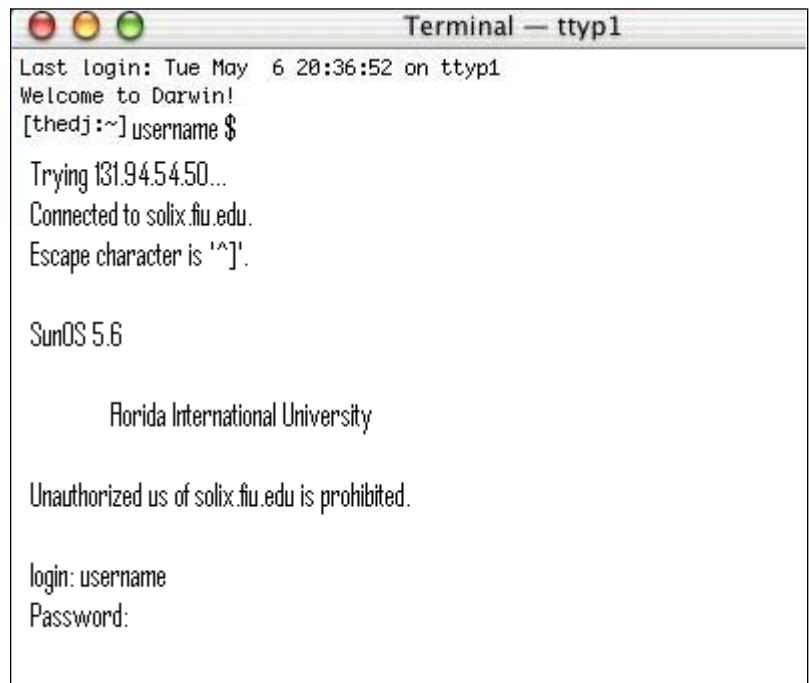
```
Terminal — ttyp1
Last login: Tue May 6 20:36:52 on ttyp1
Welcome to Darwin!
[thedj:~] username $
```

Figure C

A telnet session will open.

Type in your username and password.

As shown in Figure D



```
Terminal — ttyp1
Last login: Tue May 6 20:36:52 on ttyp1
Welcome to Darwin!
[thedj:~] username $
Trying 131.94.54.50...
Connected to solix.fiu.edu.
Escape character is '^]'.

SunOS 5.6

Florida International University

Unauthorized us of solix.fiu.edu is prohibited.

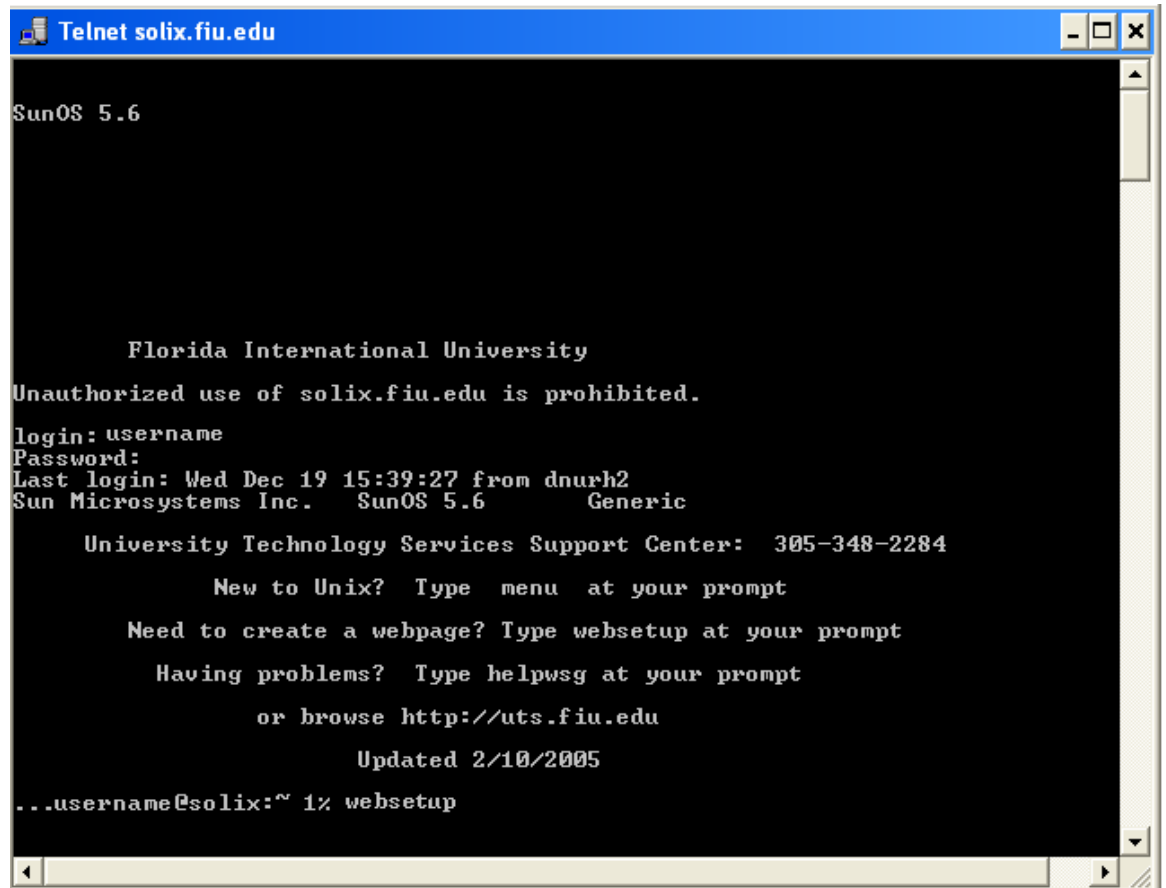
login: username
Password:
```

Figure D

II. **Create www directory (for first time Solix users only)**

If you already have a www directory and simple need to FTP image to submit to Univmail go to step 3

At login, type: websetup. See Figure E



```
Telnet solix.fiu.edu
SunOS 5.6

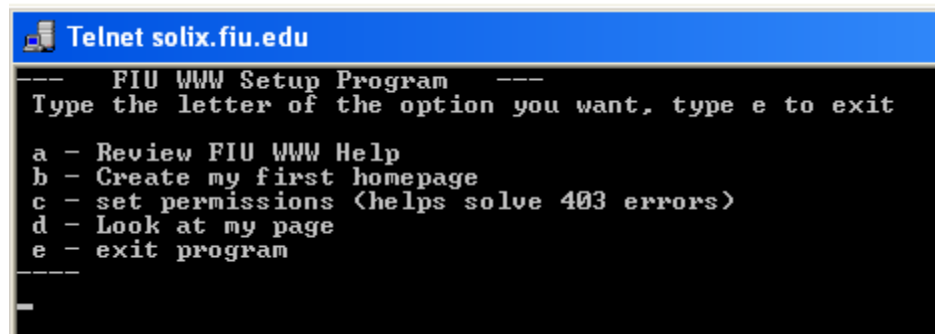
      Florida International University
Unauthorized use of solix.fiu.edu is prohibited.
login: username
Password:
Last login: Wed Dec 19 15:39:27 from dnurh2
Sun Microsystems Inc. SunOS 5.6 Generic

      University Technology Services Support Center: 305-348-2284
      New to Unix? Type menu at your prompt
      Need to create a webpage? Type websetup at your prompt
      Having problems? Type helpwsg at your prompt
      or browse http://uts.fiu.edu
      Updated 2/10/2005
...username@solix:~ 1% websetup
```

Figure E

For first time users, select 'b' for 'Create my first homepage

See Figure F

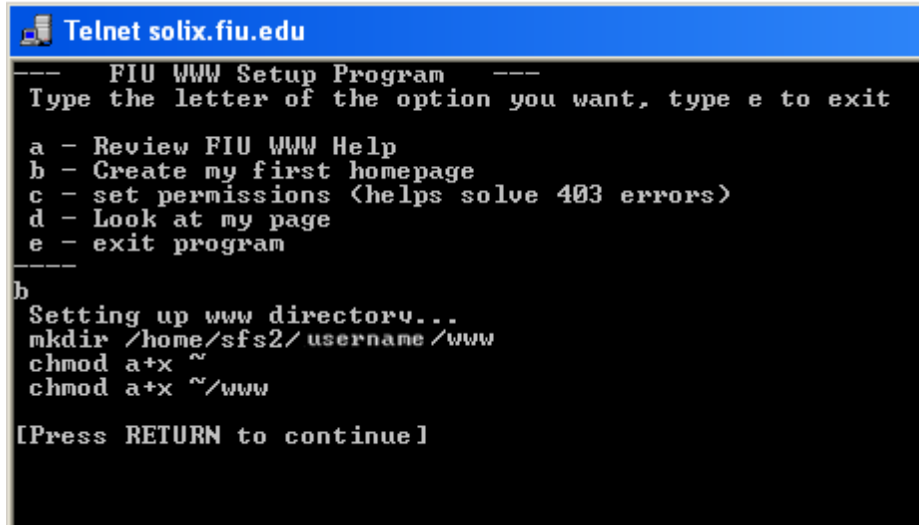


```
Telnet solix.fiu.edu
----  FIU WWW Setup Program  ----
Type the letter of the option you want, type e to exit

a - Review FIU WWW Help
b - Create my first homepage
c - set permissions (helps solve 403 errors)
d - Look at my page
e - exit program
----
```

Figure F

Press Return as instructed (Figure G)



```
Telnet solix.fiu.edu
---  FIU WWW Setup Program  ---
Type the letter of the option you want, type e to exit

a - Review FIU WWW Help
b - Create my first homepage
c - set permissions (helps solve 403 errors)
d - Look at my page
e - exit program
-----
b
Setting up www directory...
mkdir /home/sfs2/username/www
chmod a+x ~/www
chmod a+x ~/www

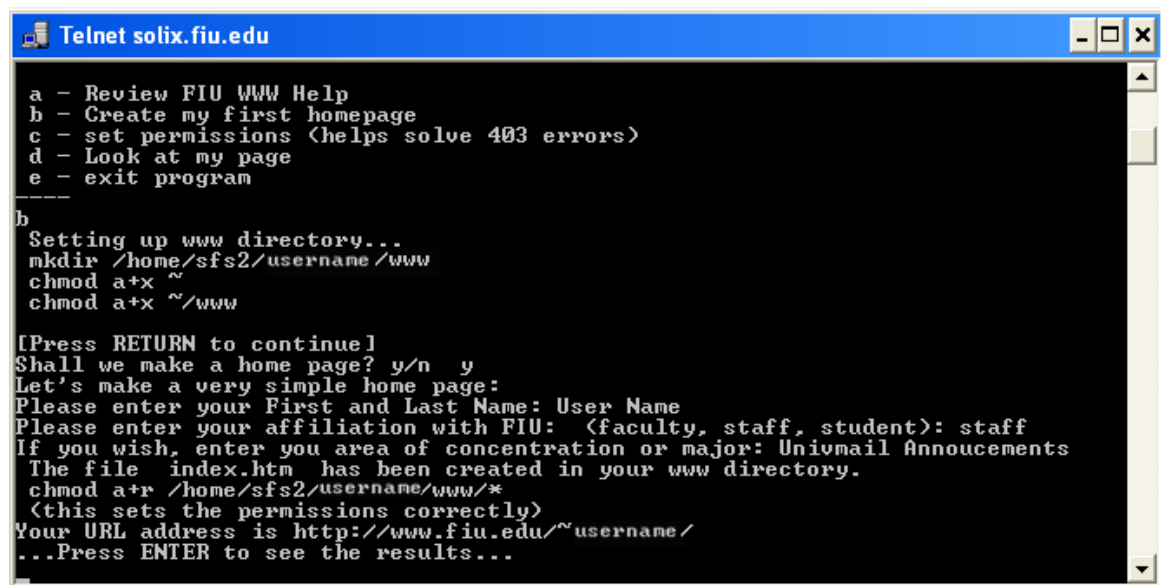
[Press RETURN to continue]
```

Figure G

Answer 'y' yes to 'Shall we make you home page?'

You will be prompted for some personal information for your basic webpage

As shown in Figure H



```
Telnet solix.fiu.edu
a - Review FIU WWW Help
b - Create my first homepage
c - set permissions (helps solve 403 errors)
d - Look at my page
e - exit program
-----
b
Setting up www directory...
mkdir /home/sfs2/username/www
chmod a+x ~/www
chmod a+x ~/www

[Press RETURN to continue]
Shall we make a home page? y/n y
Let's make a very simple home page:
Please enter your First and Last Name: User Name
Please enter your affiliation with FIU: (faculty, staff, student): staff
If you wish, enter you area of concentration or major: Univmail Announcements
The file index.htm has been created in your www directory.
chmod a+r /home/sfs2/username/www/*
<this sets the permissions correctly>
Your URL address is http://www.fiu.edu/~username/
...Press ENTER to see the results...
```

Figure H

You have successfully created your www directory and simple webpage.

III. How to use FTP to upload files

FTP stands for File Transfer Protocol, and is used to transfer files from one system to another via a network, primarily the Internet. We use an ftp client to upload and download files from our home or office computers to FIU's Internet connected hosts such as Solix. If you create your www files and images on your PC, you need to upload them to your Solix account in order for them to be viewable on the web.

We recommend using an ftp client program called WS-FTP to do this uploading. If you do not currently have this program you may download it by [clicking here](#).

Double click on the WS-FTP icon. The important boxes are the ones labeled "Host Name", "User ID", and "Password".

Host Name: solix.fiu.edu
Username: Your SOLIX username
Solix password: Your SOLIX password
Click "OK"
As shown in Figure I

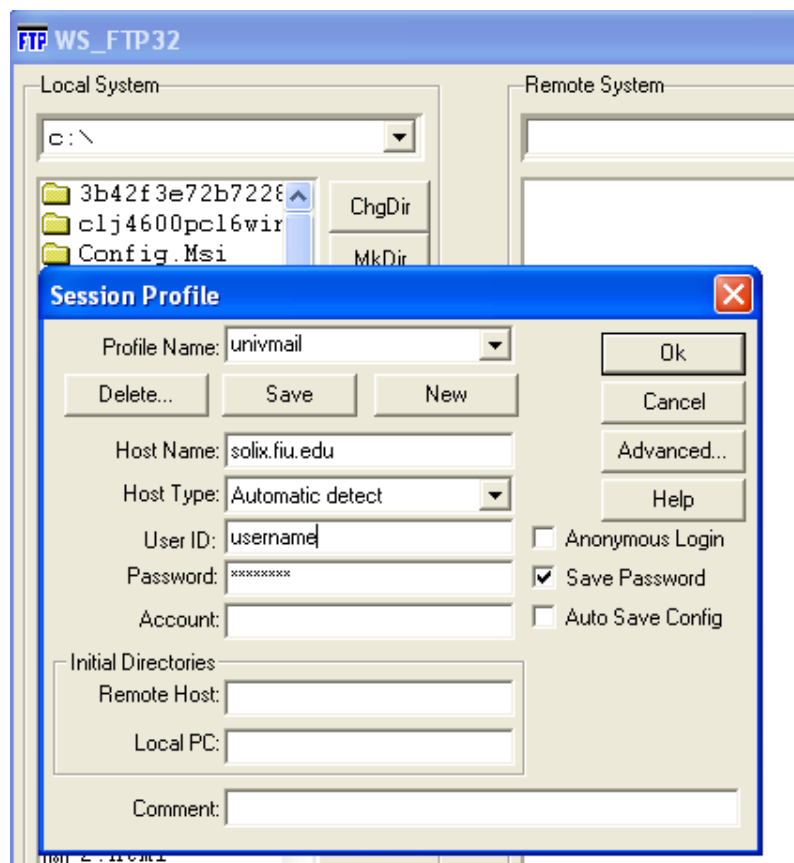


Figure I

Once connected you will be uploading the file to your www directory.

Having connected to Solix, we now see the files on our PC on the left side, and the files in our Solix account on the right. As shown in Figure J

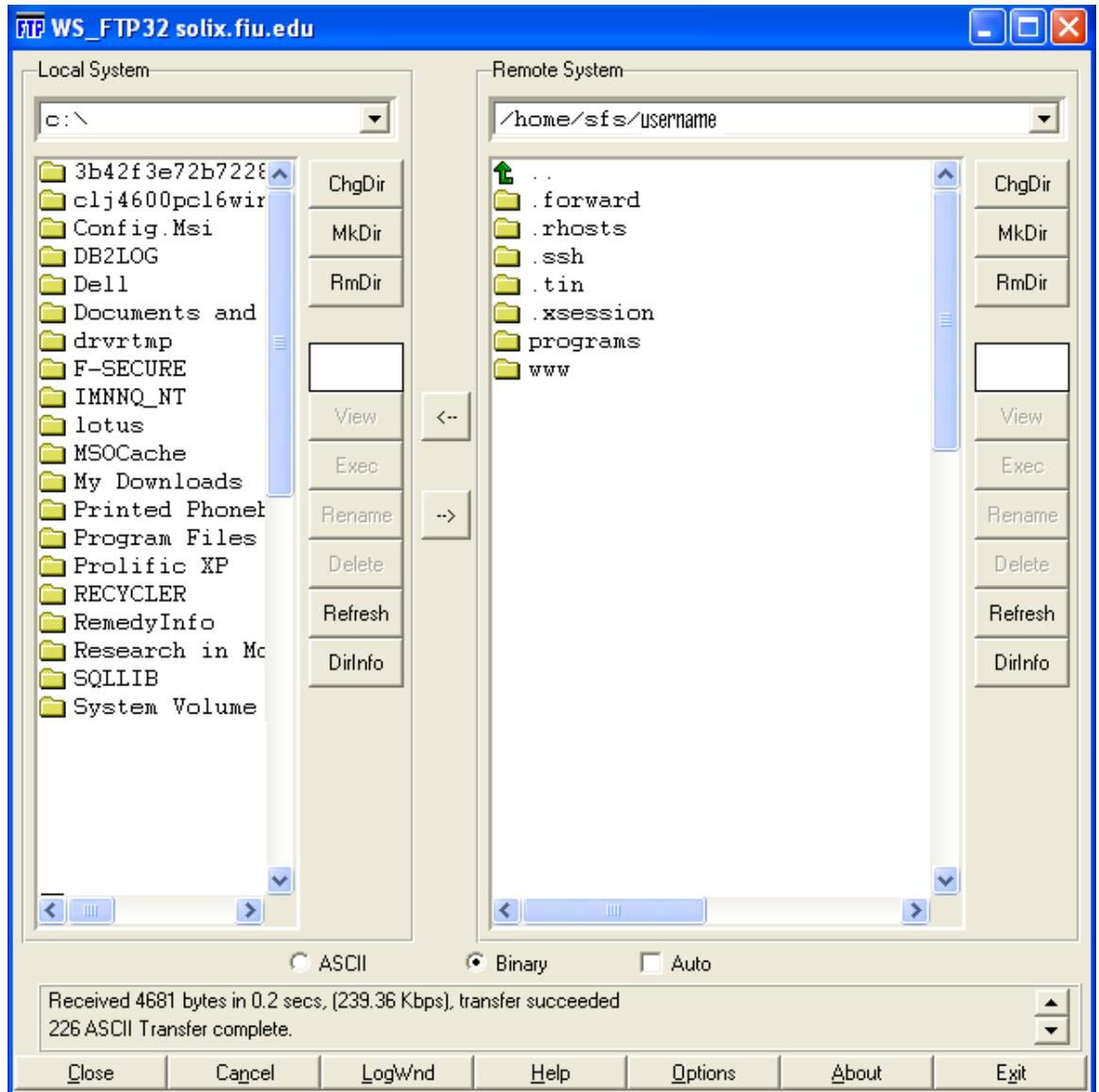


Figure J

Double click on your www directory on the Remote System side (right). As shown in Figure K. Now you are ready to transfer your files from your PC to your Solix account. Change to the appropriate directory and drive where your web files are located on the left column, which represents your PC. You can send the files over one at a time by clicking on the filename on the left side, or by holding down the CTRL button while clicking on files to select more than one file at a time, and then on the arrow pointing to the right.

During the uploading process, a dialog box will appear showing how much has been sent and time remaining.

Once completed, you should see the files you chose now listed in the right column (figure below). You are now done and can click on the Close button in the lower left corner.

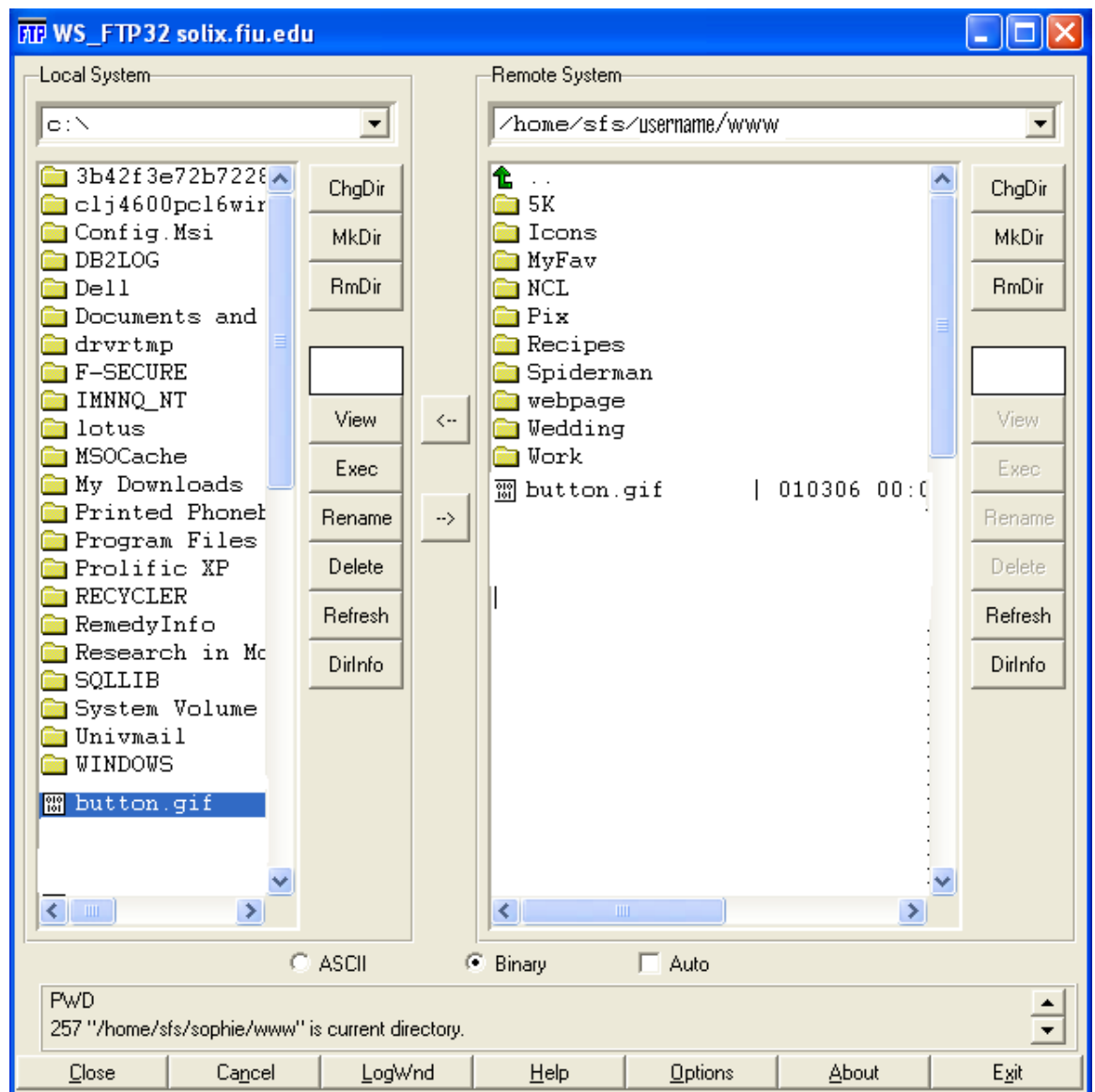


Figure K

Now that the file has been uploaded using FTP, the URL to your file will be:

Example: <http://www.fiu.edu/~username/button.gif>

IV. Common Error Messages

I uploaded the files, but when I try to view them through my web browser, I get an error:403 - Forbidden Error

The URL above exists, but the permissions are set so that you do not have access to it. This means that the permissions on the file or files are not set so that the world can view them. The program websetup will fix the permissions for you. See Figure F above, select option c and type 'y' for yes. Your file permissions have now been set!

I get boxes with question marks in them where my images should be.

This means that the file you are referring to doesn't exist. It could be spelled differently, in a different location, or the case may not be correct (Solix is case sensitive, so smile.gif and SMILE.GIF are seen as two different filenames).

I see a torn, colored box where my image should be.

This means that the file exists, but that the permissions are not correct. Run the websetup program to set the permissions correctly. See Figure F above, select option c and type 'y' for yes. Your file permissions have now been set!